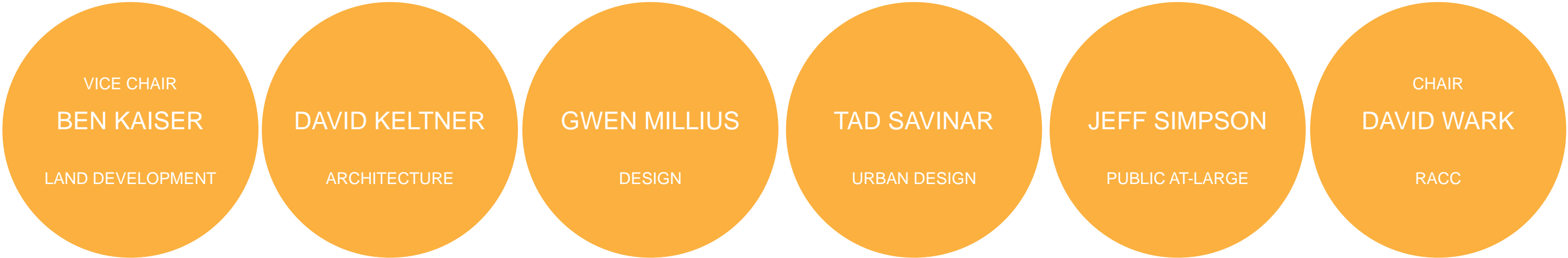


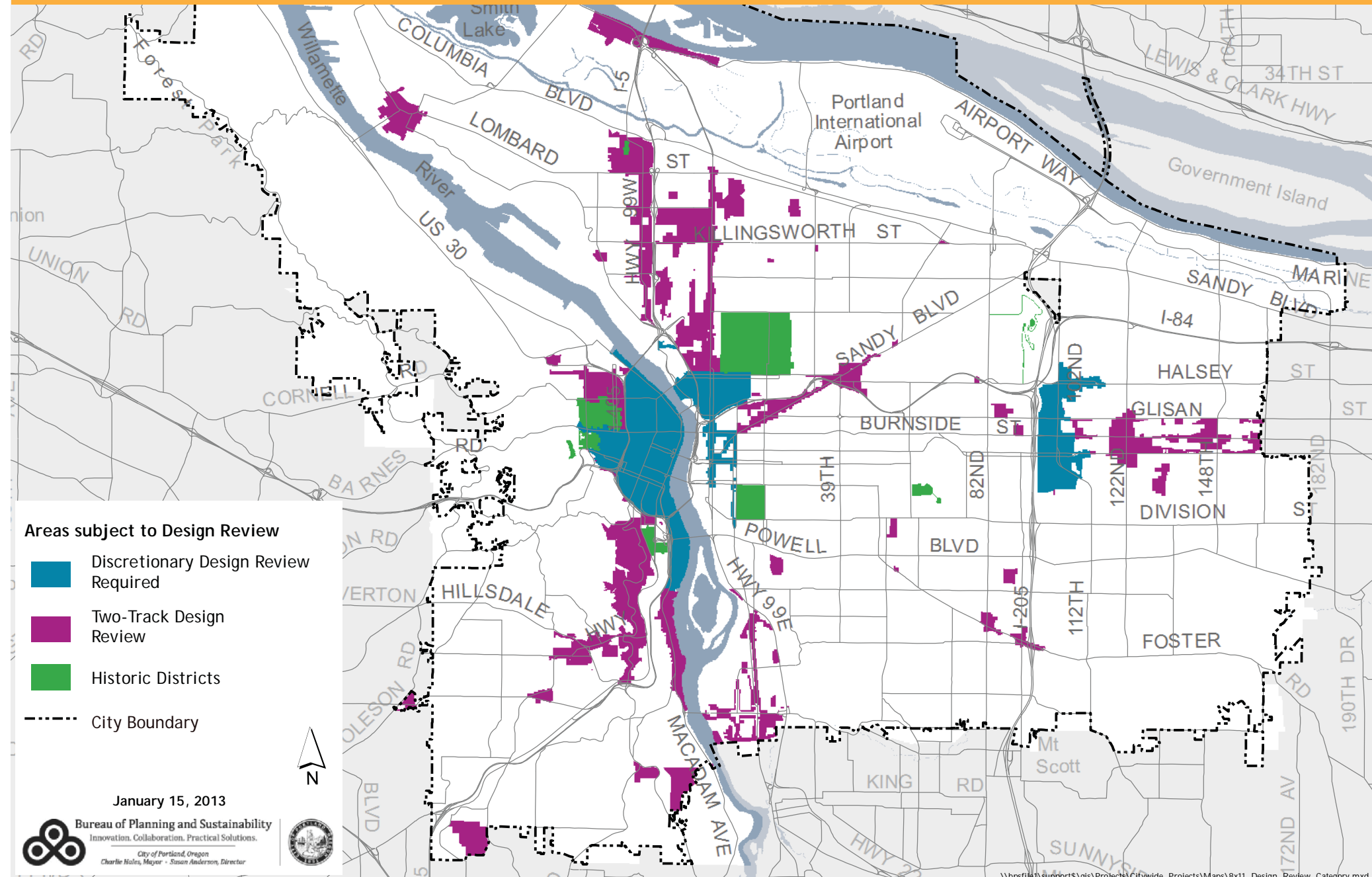
STATE OF THE CITY DESIGN REPORT 2015

PORTLAND
DESIGN COMMISSION
08 APRIL 2015

DESIGN COMMISSIONERS



DESIGN REVIEW AREAS



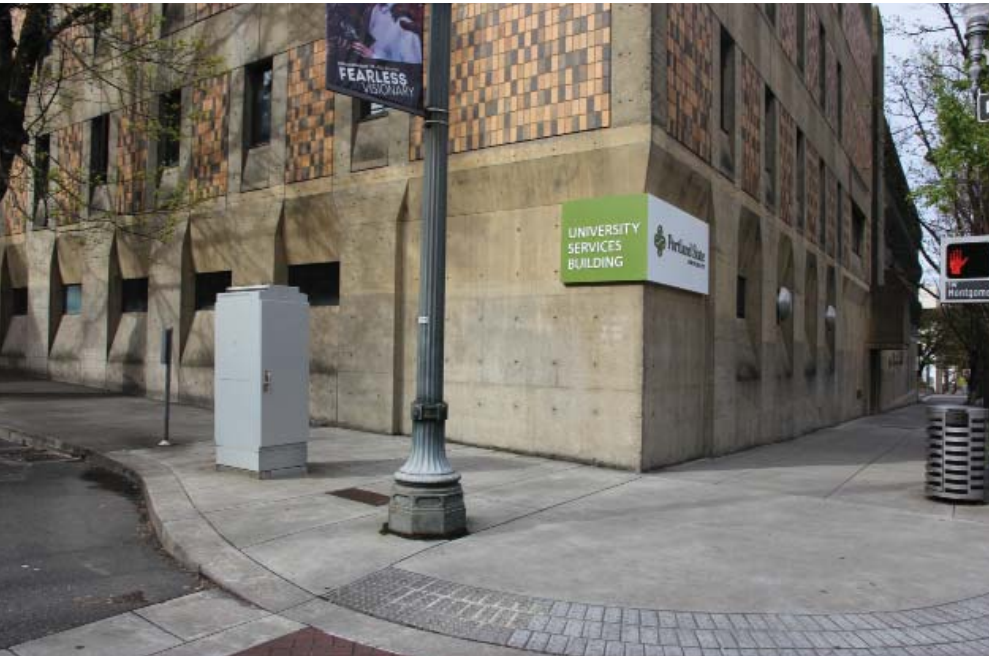
DESIGN COMMISSION'S ROLE



DESIGN COMMISSION'S ROLE



DESIGN COMMISSION'S ROLE



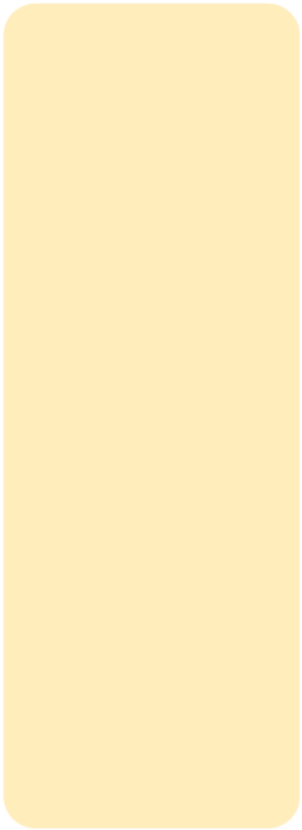
DESIGN COMMISSION'S ROLE

c. 1982

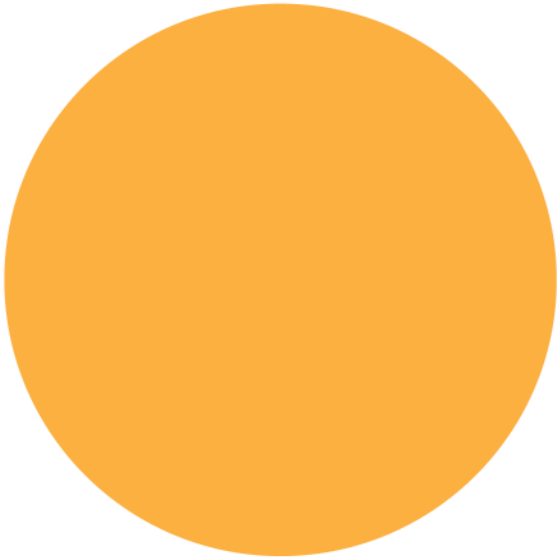
DESIGN COMMISSION'S ROLE



DESIGN COMMISSION'S ROLE

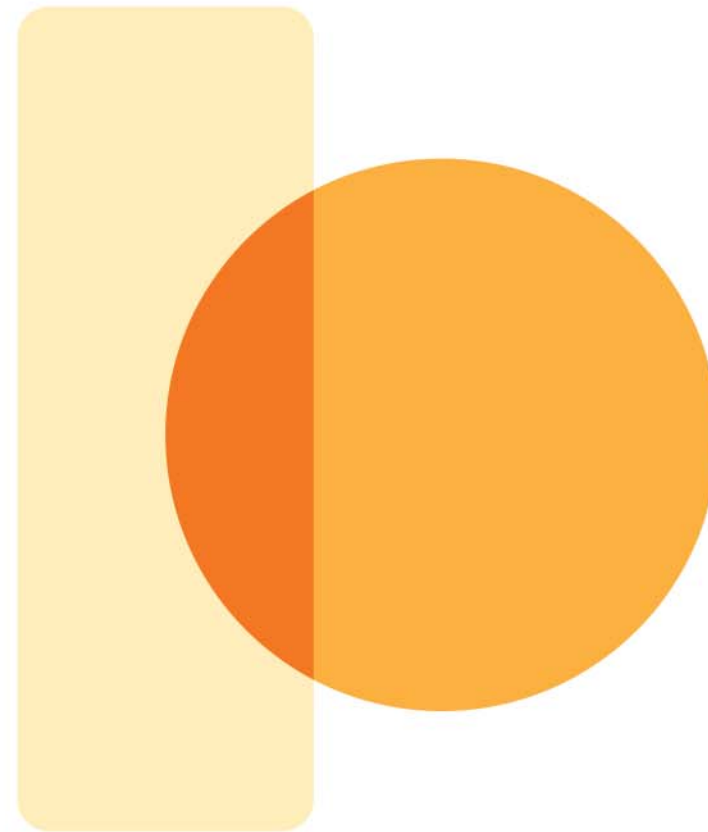


PROPOSED DESIGN

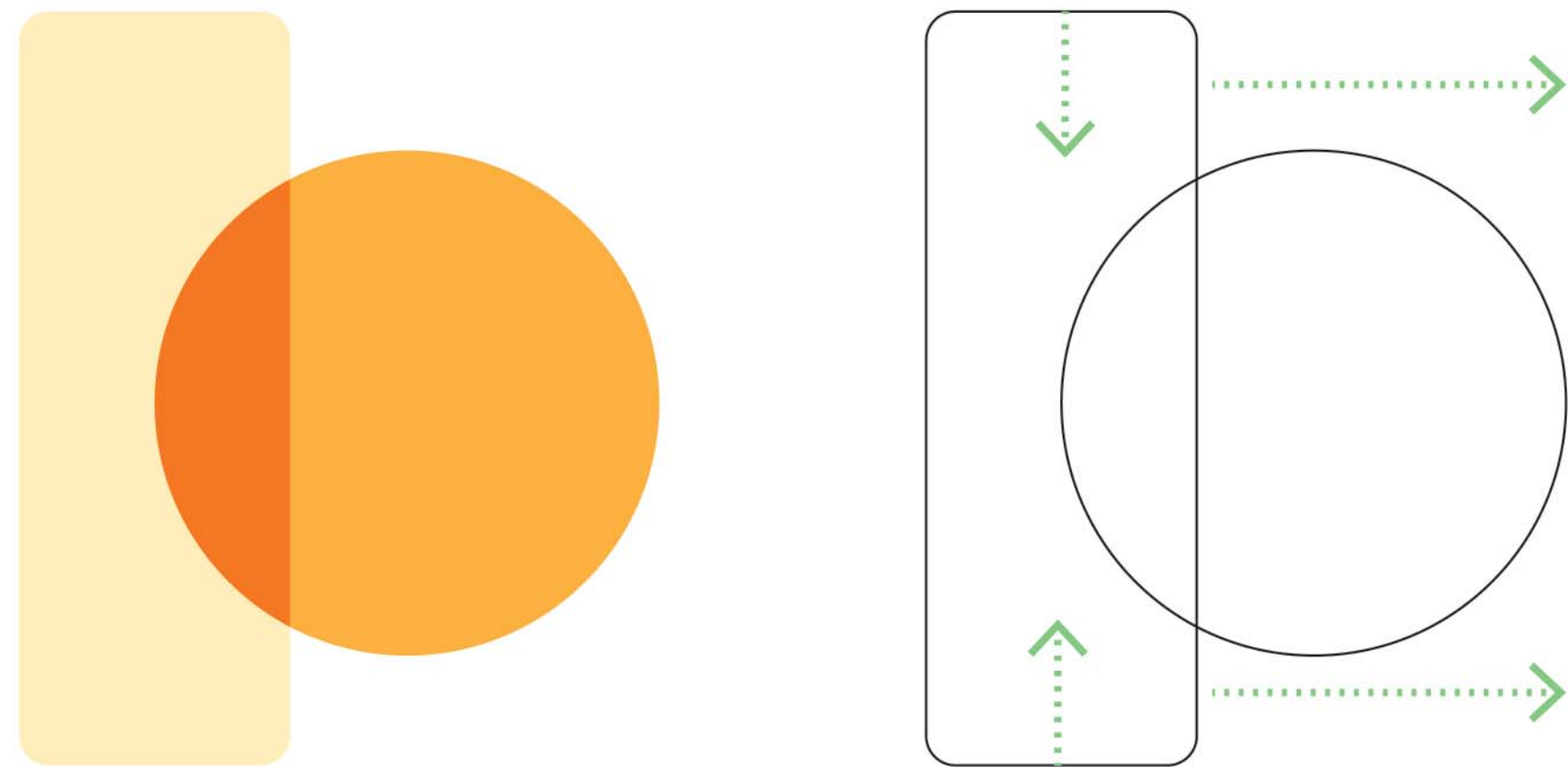


DESIGN GUIDELINES

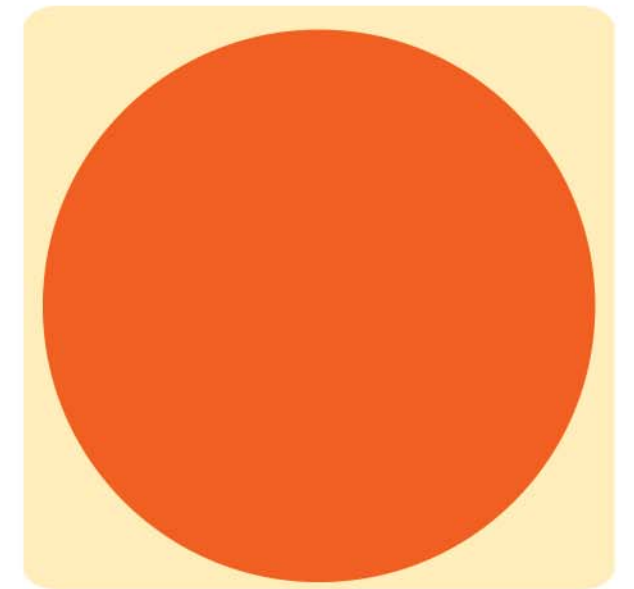
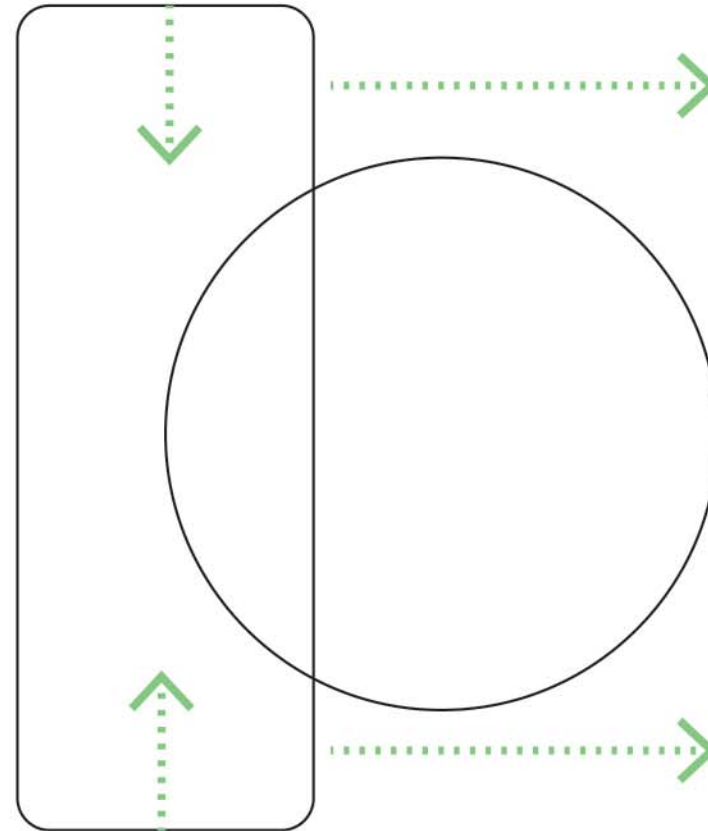
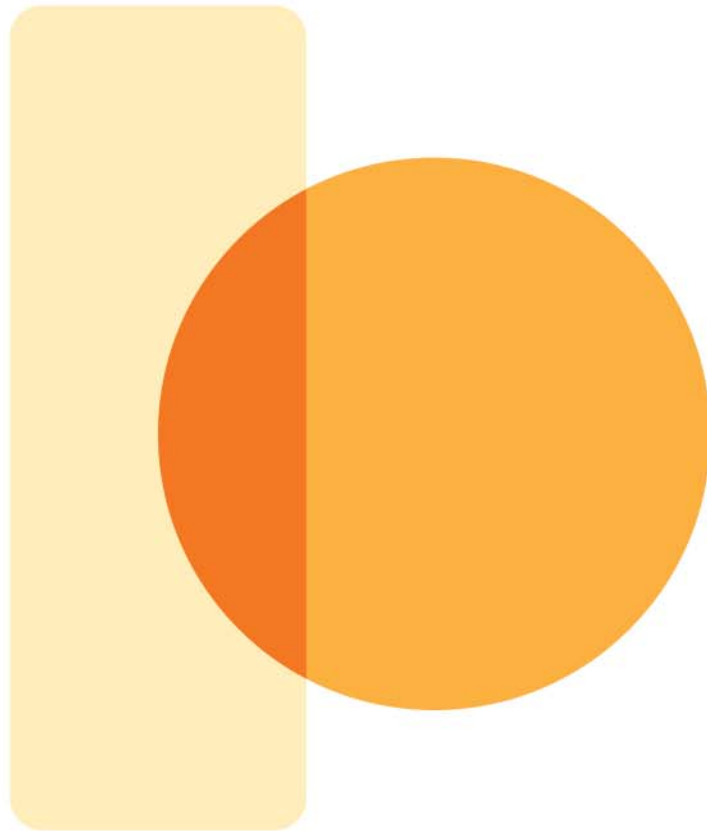
DESIGN COMMISSION'S ROLE



DESIGN COMMISSION'S ROLE



DESIGN COMMISSION'S ROLE







Historic Photo - Project Site



1 524 E Burnside Street



5 811 E Burnside Street



2 612-616 E Burnside Street



6 930-938 E Burnside Street



3 722-738 E Burnside Street



7 1040 E Burnside Street



4 723-737 E Burnside Street



8 1111 E Burnside Street



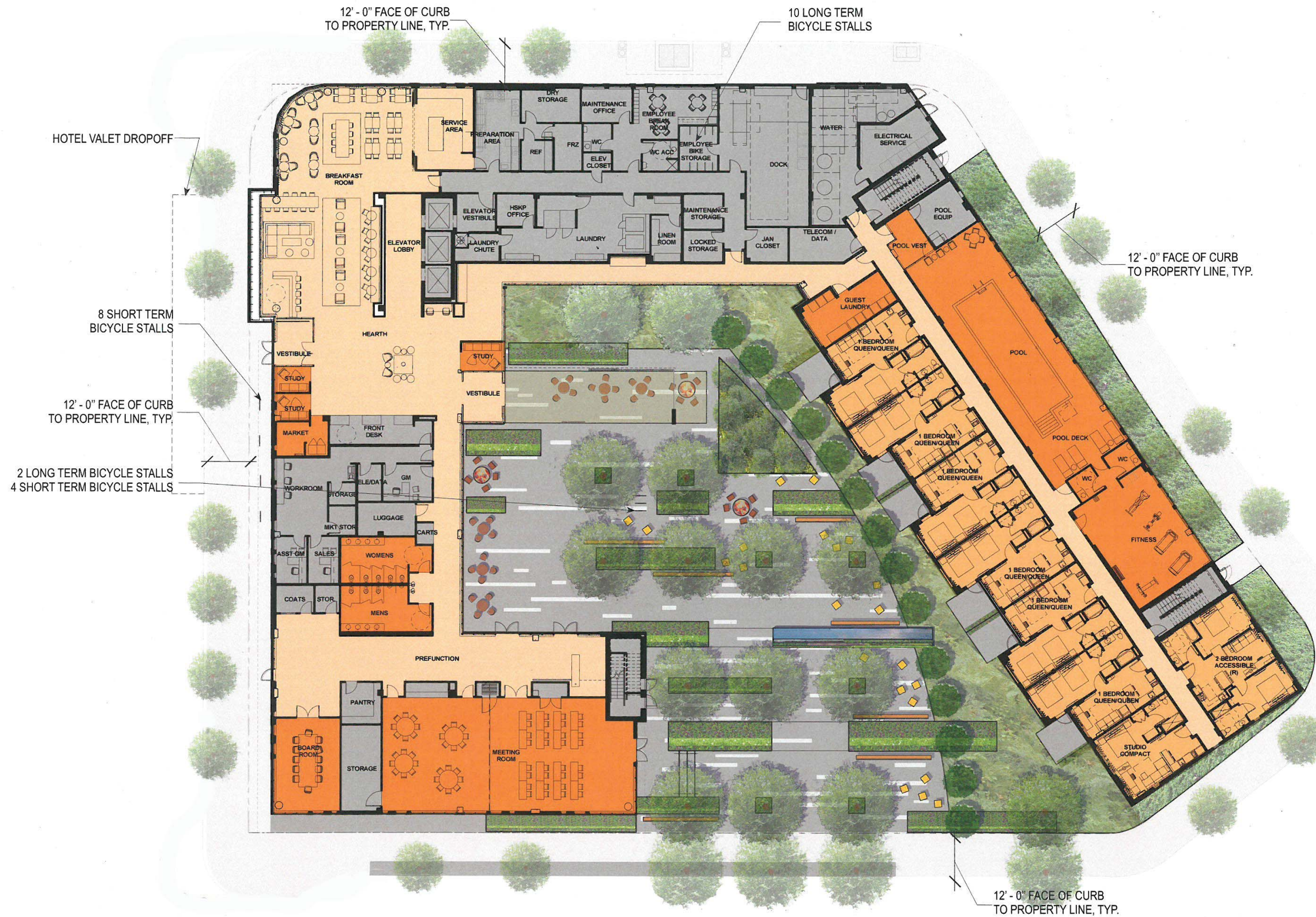














2014

24

TYPE III

26

D.A.R.

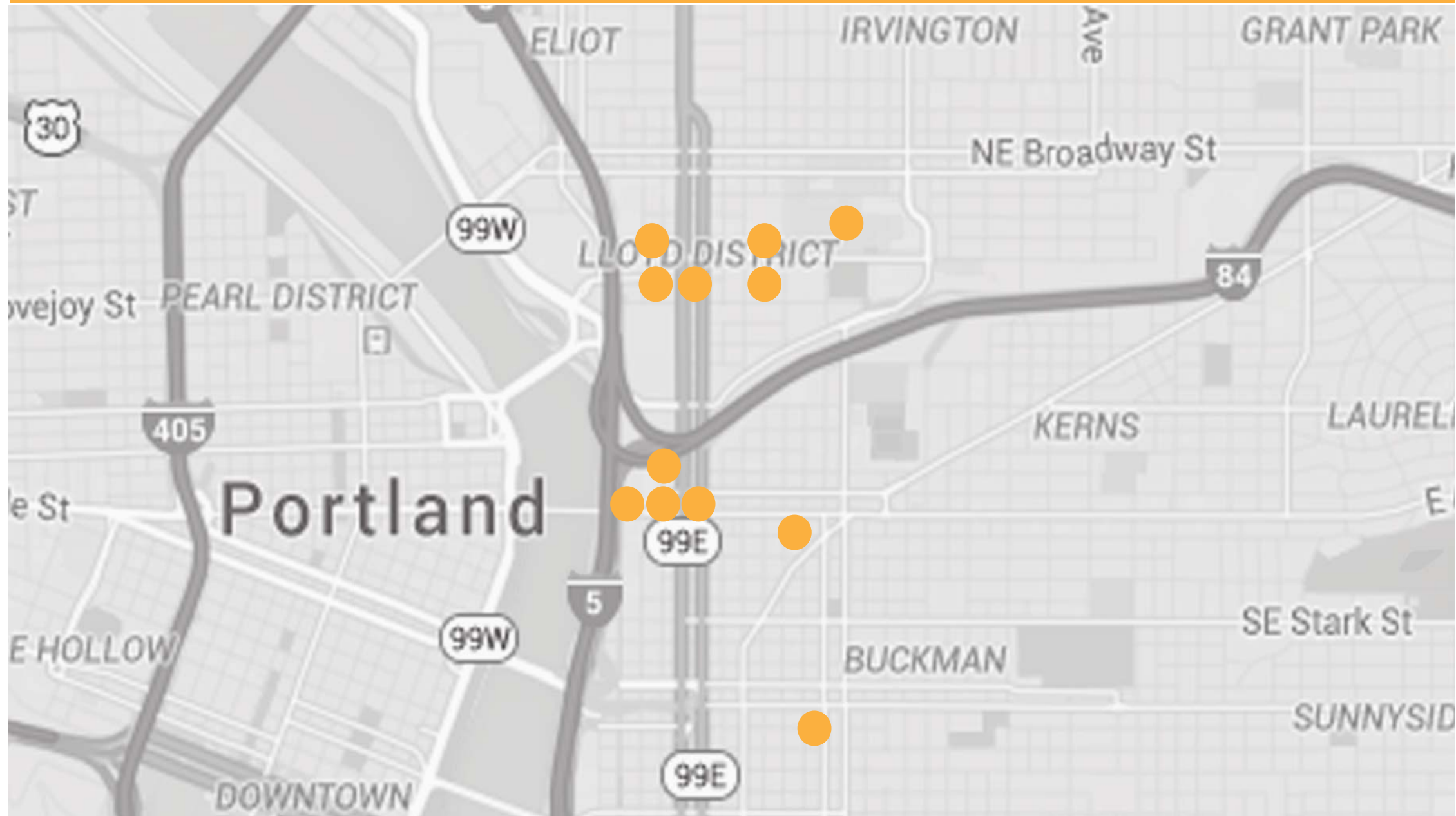
7

BRIEFINGS

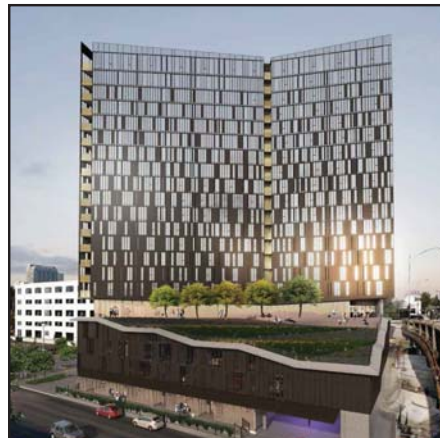
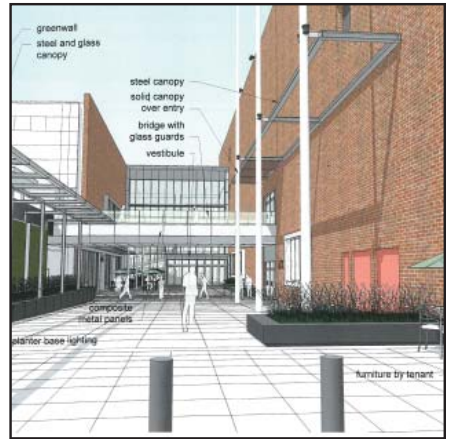
2

TYPE II
APPEALS

2014 EASTSIDE



2014 EASTSIDE



2014 EASTSIDE

4,500,000

SQ FT

196,000

RETAIL

3,300

UNITS

3,400

PARKING

DESIGN COMMISSION POWERS AND DUTIES

RECOMMEND THE ESTABLISHMENT, AMENDMENT, OR REMOVAL OF A DESIGN DISTRICT

DEVELOP DESIGN GUIDELINES

REVIEW MAJOR DEVELOPMENTS

REVIEW OTHER LAND USE REQUESTS

PROVIDE ADVICE ON DESIGN MATTERS

DESIGN ADVICE

EXPAND d OVERLAY ZONE

RECONSIDER HOUSING BONUS

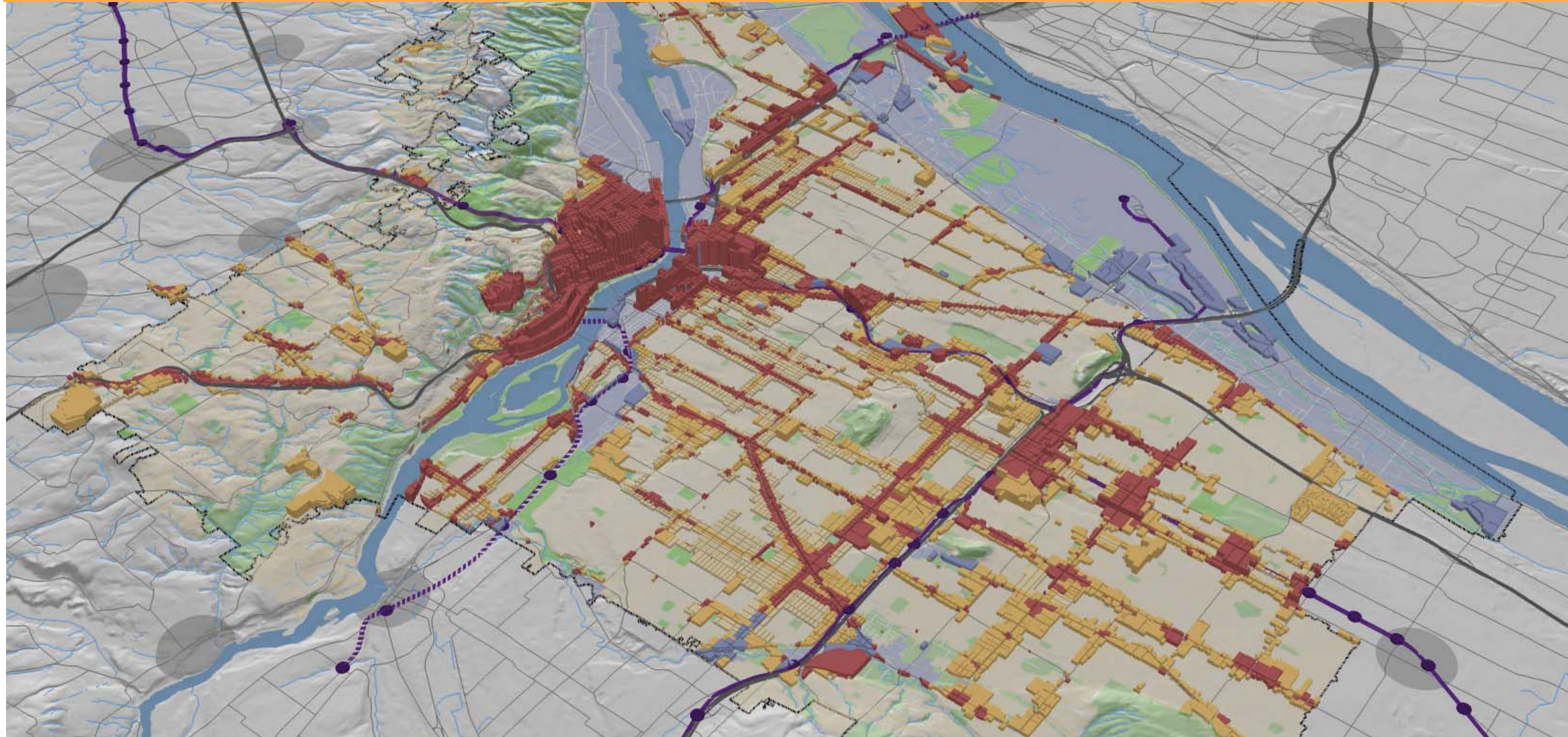
UPDATE COMMUNITY DESIGN STANDARDS

ELIMINATE HOUSING AS GROUND FLOOR ACTIVE USE

GROUND FLOOR ACTIVE USE



ELIMINATE HOUSING AS GROUND FLOOR ACTIVE USE



IN COMMERCIAL CORRIDORS

ELIMINATE HOUSING AS GROUND FLOOR ACTIVE USE



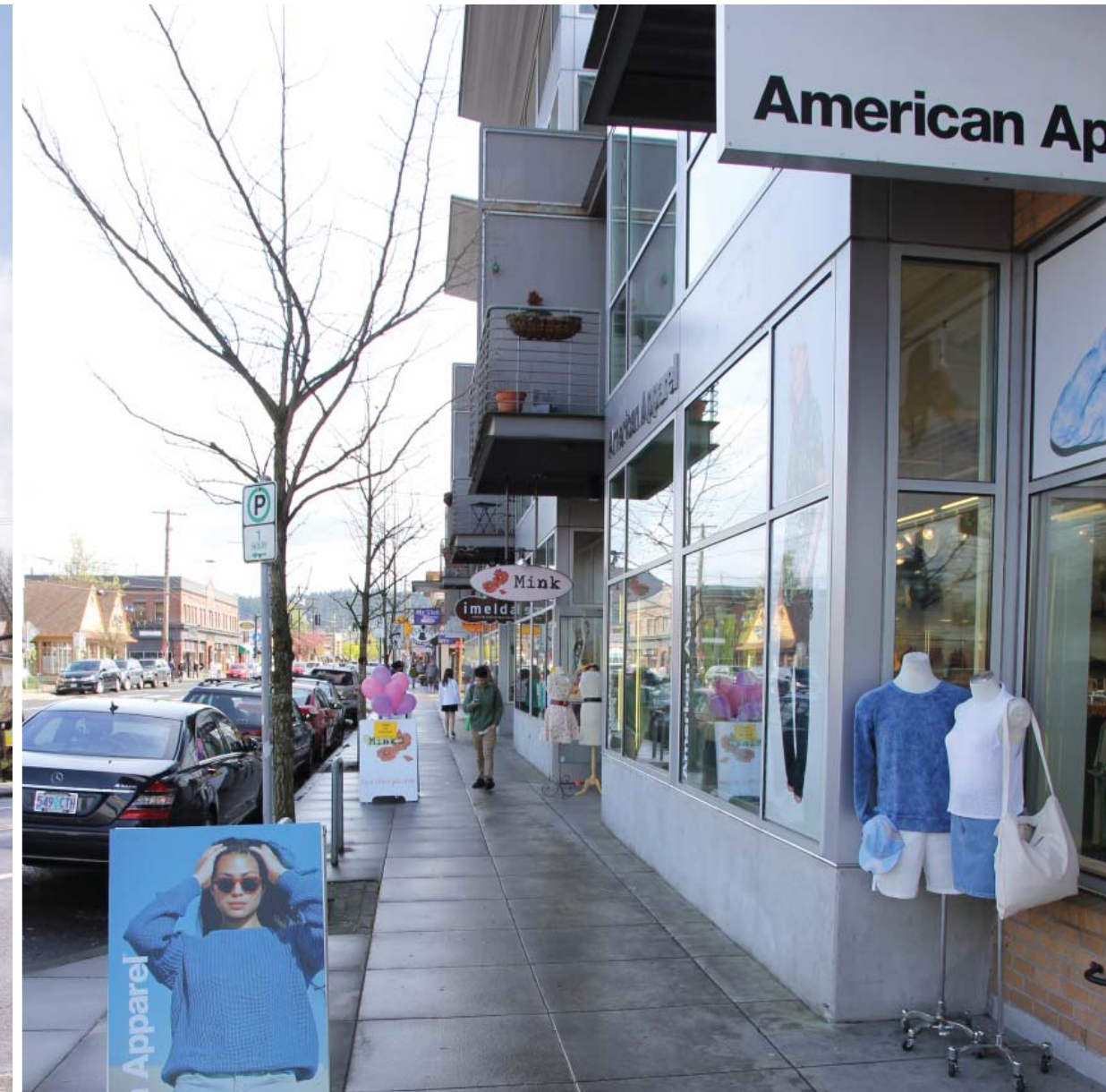
ELIMINATE HOUSING AS GROUND FLOOR ACTIVE USE



ELIMINATE HOUSING AS GROUND FLOOR ACTIVE USE



ELIMINATE HOUSING AS GROUND FLOOR ACTIVE USE



DISCUSSION

